

# Overview of PACE in California

## Elder Care – PACE Program

California Primary Care Annual Conference  
October 18, 2019

Peter Hansel  
Chief Executive Officer, CalPACE



---

---

---

---

---

---

---

---

# What is PACE?

- A fully integrated care program for adults age 55 or older living with chronic illnesses or disabilities
- Coordinates and provides comprehensive services to enable seniors to live independently at home or in the community for as long as possible
- Provides all care and services covered by Medicare and Medi-Cal as well as other services that are necessary to enable persons to live safely in the community
- Fully capitated and at risk for providing all services



---

---

---

---

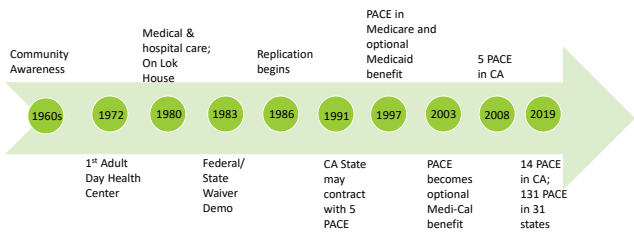
---

---

---

---

# History of PACE



---

---

---

---

---

---

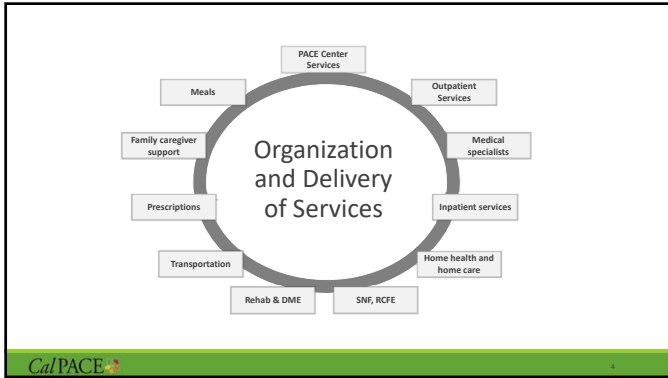
---

---

## Slide 3

---

**JB1** Jennifer Blankenship, 9/7/2018




---

---

---

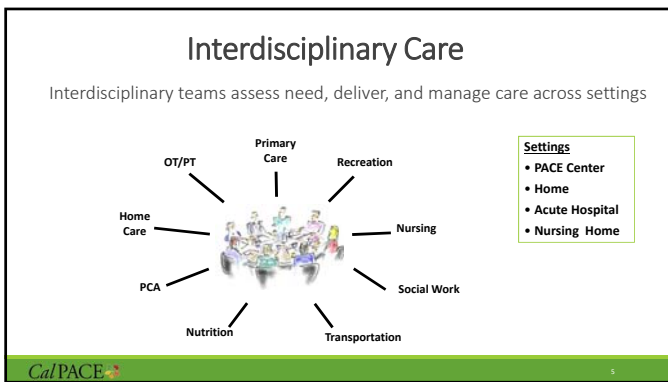
---

---

---

---

---




---

---

---

---

---

---

---

---

**Eligibility**

Persons are eligible for PACE if they meet the following conditions:

- 55 years or older
- Resident of PACE service area
- State-certified to need nursing home level care
- Can live safely in community at time of enrollment

---

---

---

---

---

---

---

---

### PACE Participant Profile



- Average age: 77 years
- Percent dually eligible: 73%
- Percent with Alzheimer's, dementia: 37%
- Percent with 3 or ADLs: 54%
- Average number of medical diagnoses: 18
- Average Medicare risk score: 2.18
- Percent Residing in Community: 97%

---

---

---

---

---

---

---

---

### PACE Outcomes

- 100% of participants have a medical home
- Hospital and ER utilization comparable to general Medicare population
- Very low rate of voluntary disenrollment
- Over 90% of participants are very satisfied with their care and close to 90% would refer a close friend to the program

---

---

---

---

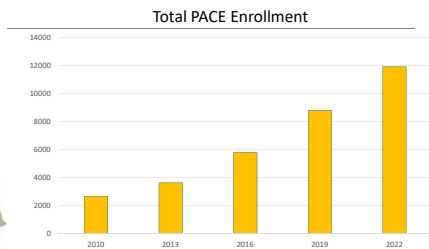
---

---

---

---

### CA PACE Locations and Enrollment Growth



---

---

---

---

---

---

---

---

### CalPACE Members and Allied Organizations

**In development:**

- Central Valley PACE
- LA Coast PACE
- Sequoia PACE
- North East Medical Services

---

---

---

---

---

---

---

---

### California PACE Association (CalPACE)

Formed in 2007 as a 501(c)(6) association

First state association of Program of All-inclusive Care for the Elderly (PACE) providers

Through education and advocacy, CalPACE strives to support and expand the PACE model and promote high-quality health care services to California's seniors

CalPACE

---

---

---

---

---

---

---

---

### Contact

**Peter Hansel**  
Chief Executive Officer

Phone: (916) 469-3368  
Email: [phansel@calpace.org](mailto:phansel@calpace.org)  
Web: [www.calpace.org](http://www.calpace.org)




---

---

---

---

---

---

---

---