

Overview of PACE in California

Elder Care – PACE Program





California Primary Care Annual Conference
October 18, 2019

Peter Hansel
Chief Executive Officer, CalPACE



1

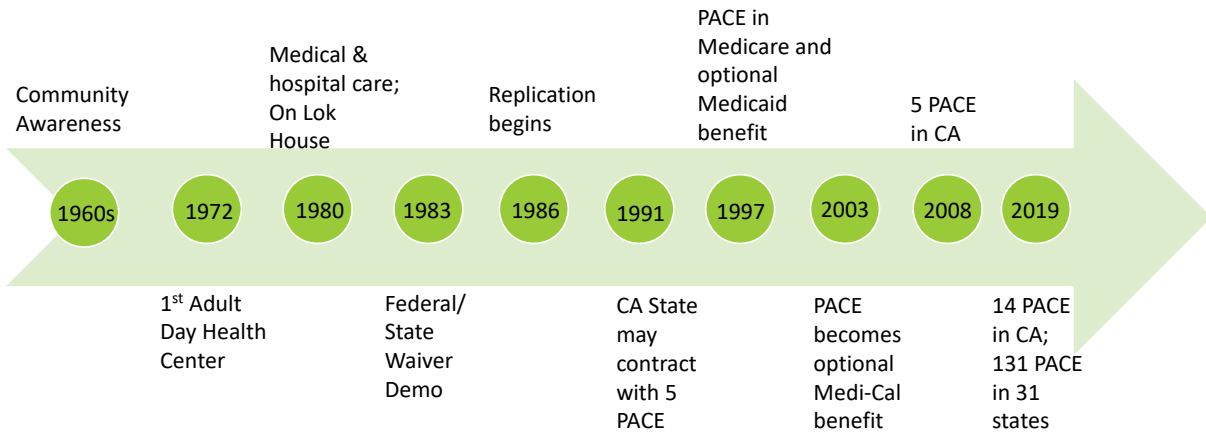
What is PACE?

-  A fully integrated care program for adults age 55 or older living with chronic illnesses or disabilities
-  Coordinates and provides comprehensive services to enable seniors to live independently at home or in the community for as long as possible
-  Provides all care and services covered by Medicare and Medi-Cal as well as other services that are necessary to enable persons to live safely in the community
-  Fully capitated and at risk for providing all services

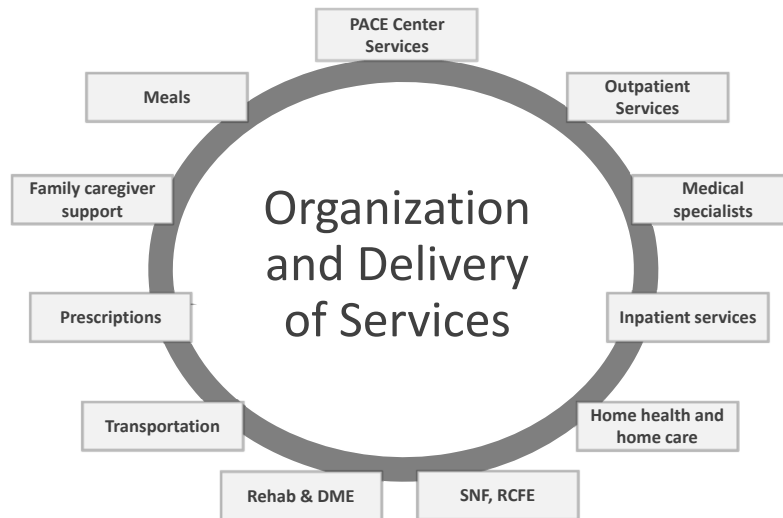
2

JB1

History of PACE



Organization and Delivery of Services

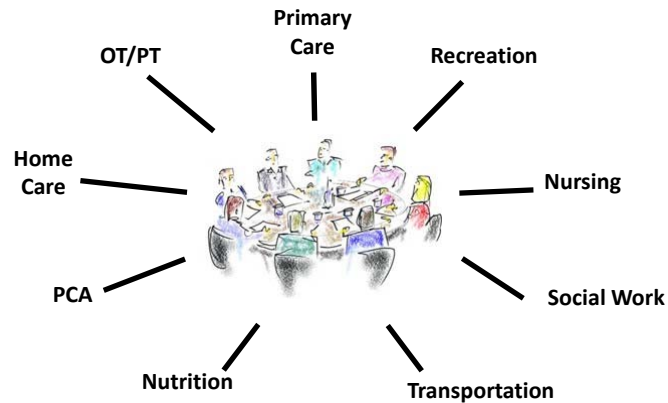


Slide 3

JB1 Jennifer Blankenship, 9/7/2018

Interdisciplinary Care

Interdisciplinary teams assess need, deliver, and manage care across settings



Settings

- PACE Center
- Home
- Acute Hospital
- Nursing Home

Eligibility



Persons are eligible for PACE if they meet the following conditions:

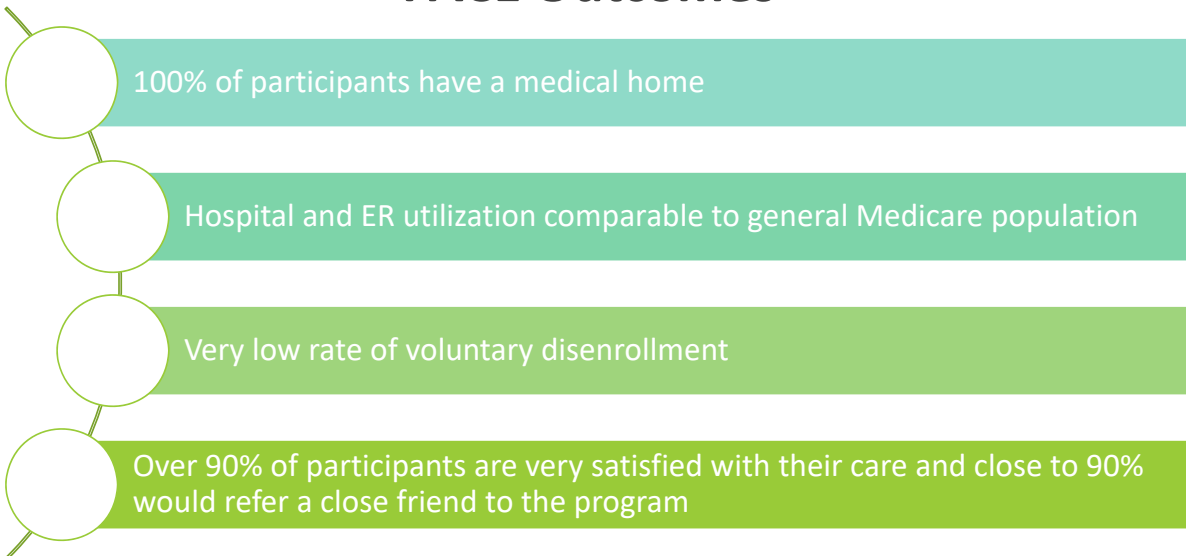
- 55 years or older
- Resident of PACE service area
- State-certified to need nursing home level care
- Can live safely in community at time of enrollment

PACE Participant Profile



- Average age: 77 years
- Percent dually eligible: 73%
- Percent with Alzheimer's, dementia: 37%
- Percent with 3 or ADLs: 54%
- Average number of medical diagnoses: 18
- Average Medicare risk score: 2.18
- Percent Residing in Community: 97%

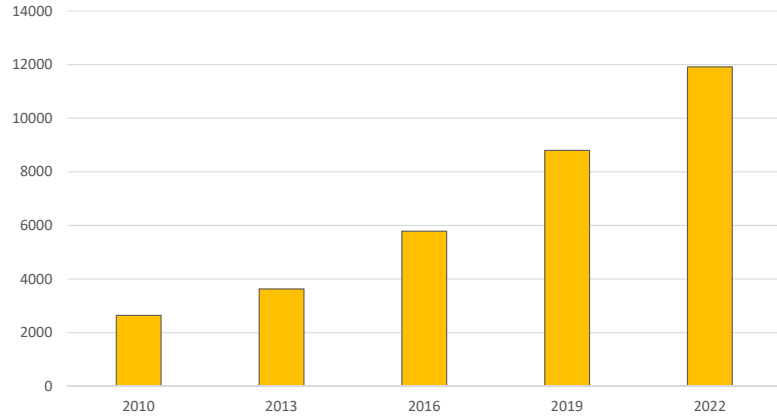
PACE Outcomes



CA PACE Locations and Enrollment Growth



Total PACE Enrollment



CalPACE Members and Allied Organizations



In development:

- Central Valley PACE
- LA Coast PACE
- Sequoia PACE
- North East Medical Services



California PACE Association (CalPACE)



Formed in 2007 as a 501(c)(6) association

First state association of Program of All-inclusive Care for the Elderly (PACE) providers

Through education and advocacy, CalPACE strives to support and expand the PACE model and promote high-quality health care services to California's seniors

Contact

Peter Hansel
Chief Executive Officer

Phone: (916) 469-3368
Email: phansel@calpace.org
Web: www.calpace.org

