



Together We Can Build a Healthy California for All

Mark Ghaly, MD, MPH

California Health and Human Services Agency
Person Centered. Data Driven.

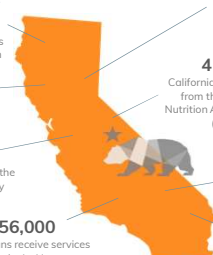
Who We Are

At the California Health and Human Services Agency our Departments and Offices provide programmatic resources through the delivery of both short-term and long-term public benefits, including nutrition assistance, child care, health care coverage, housing support, employment support, child support services, child welfare, and many more.

“Together we must work with counties, cities, and communities to make California a healthy, vibrant, and inclusive place to live, play, work, and learn.”

12 Departments • 5 Offices • 34,000 Employees • \$163 Billion Budget

Who We Serve



- 12.9 million** Californians receive benefits from the Medi-Cal Program
- 13,000** Californians receive services through the Department of State Hospitals
- 1 million** Californians receive benefits from the Temporary Assistance for Needy Families Program (CaliWORKs)
- 556,000** Californians receive services from the In-Home Supportive Services Program
- 314,000** Californians receive services from the Developmental Services System
- 4 million** Californians receive benefits from the Supplemental Nutrition Assistance Program (CalFresh)
- 63,000** Californians receive services from the Child Welfare System
- 1.3 million** Californians receive benefits from the Women, Infant, and Children Program

Our Strategic Priorities

Person Centered. Data Driven.

4

Our Guiding Principles

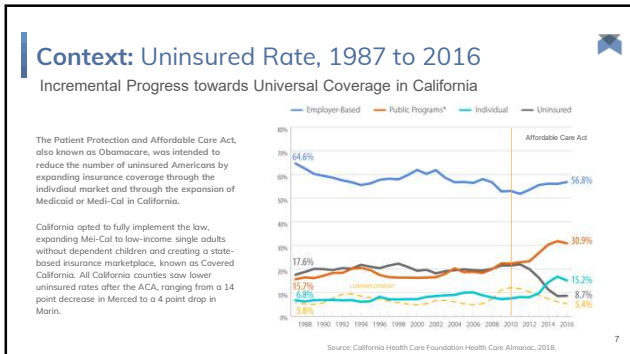
Person Centered. Data Driven.

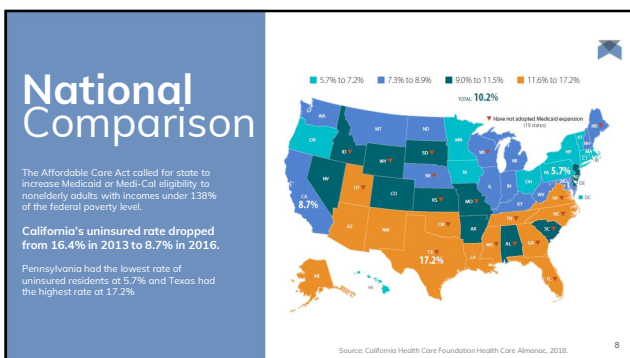
- Adopt a Culture of Collaboration & Innovation**
We will courageously try new approaches to solve our most intractable problems.
- Focus on Measurable Outcomes & Value Generation**
We must ensure that the delivery of our programs and services are centered on the needs of the people we serve.
- Use Data to Drive Action**
We must better leverage our data to understand the conditions in our community, the impact of our current programs, and the opportunities to improve our service delivery.
- Put the Person back in Person-Centered**
We must engage people and communities so that programs are structured to meet the diverse and unique needs of each community and constituent.
- See the Whole Person**
Regardless of which department is leading on a given issue, we should always be thinking about what each person needs comprehensively to thrive.

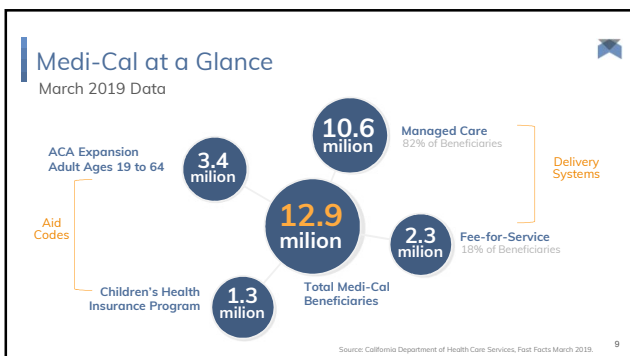
5

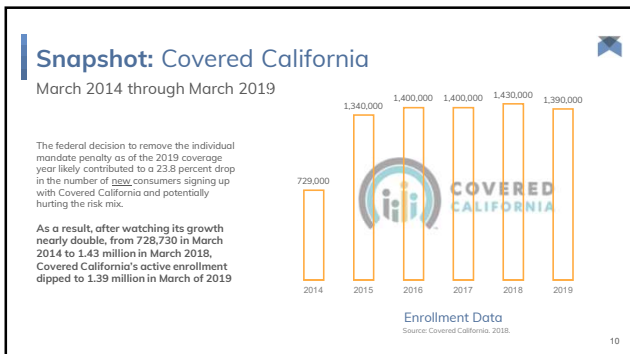
Build a Healthy California For All

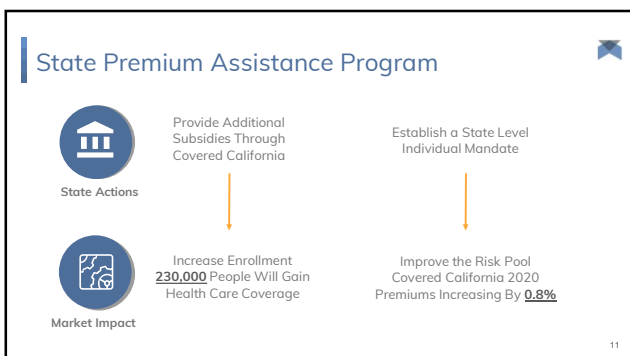
6











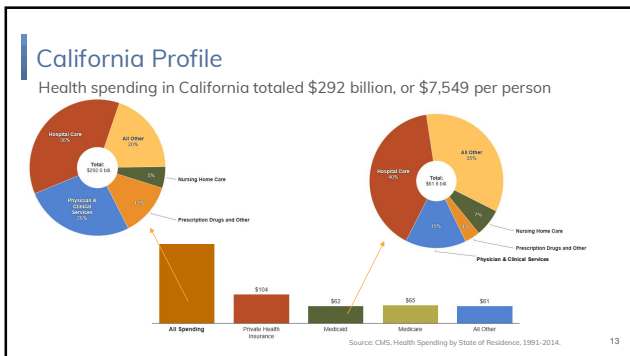
Healthy California For All Commission

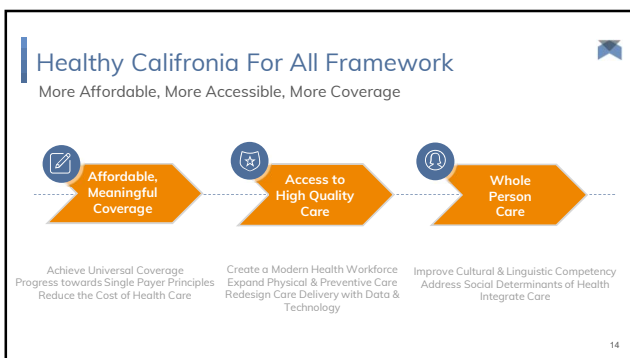
Charged with Developing a Plan for Advancing Progress Toward a Health Care System that Provides Coverage and Access Through a Unified Financing System.

PHASE 1
Environmental Analysis Report
Due July 2020

PHASE 2
Key Design Considerations Report
Due February 2021

12







Population Health Drivers

Health starts in our homes, schools, workplaces, neighborhoods, and communities.

We know that taking care of ourselves by eating well and staying active, not smoking, getting the recommended immunizations and screening tests, and seeing a doctor when we are sick all influence our health.

Our health is also determined in part by access to social and economic opportunities; the resources and supports available in our homes, neighborhoods, and communities; the quality of our schooling; the safety of our workplaces; the cleanliness of our water, food, and air; and the nature of our social interactions and relationships.

16

Our Program Snapshot

Two-thirds of CalWORKs clients received benefits from 3 CHHS programs in 2016; another quarter were involved with 4 programs.

More than half of Medi-Cal enrollees did not receive services from any other CHHS programs.

1 in 10 individuals involved with the child welfare system touched at least 5 CHHS programs in 2016.

Program	1 program	2 programs	3 programs	4 programs	5+ programs
Medi-Cal	56.8	28.3	11.7	0.0	0.0
CalWORKs	6.4	64.7	25.9	0.0	0.0
CalFresh	54.2	32.1	8.8	0.0	0.0
Child Welfare	22.5	21.6	26.2	20.0	1.8
Developmental	16.3	40.6	7.8	31.0	0.0
WIC	9.8	34.5	21.8	31.2	0.0
FPACT	54.1	29.9	11.7	0.0	0.0
IHSS	76.1	22.4	0.0	0.0	0.0

17

Building Systems of Care

Too often we are focused on delivering specific programs or services within our government silos that we do not take the time to look at the how our programs and services complement one another to best address the needs of the children and youth we are serving.

“ Siloed systems yield siloed responses. ”

We recognize that it is our obligation to ensure that the services we are providing are coordinated, timely, and trauma-informed. We must come together as one government to break down silos and build a culture that is focused on delivering services that are person-centered and not program-centered.

18